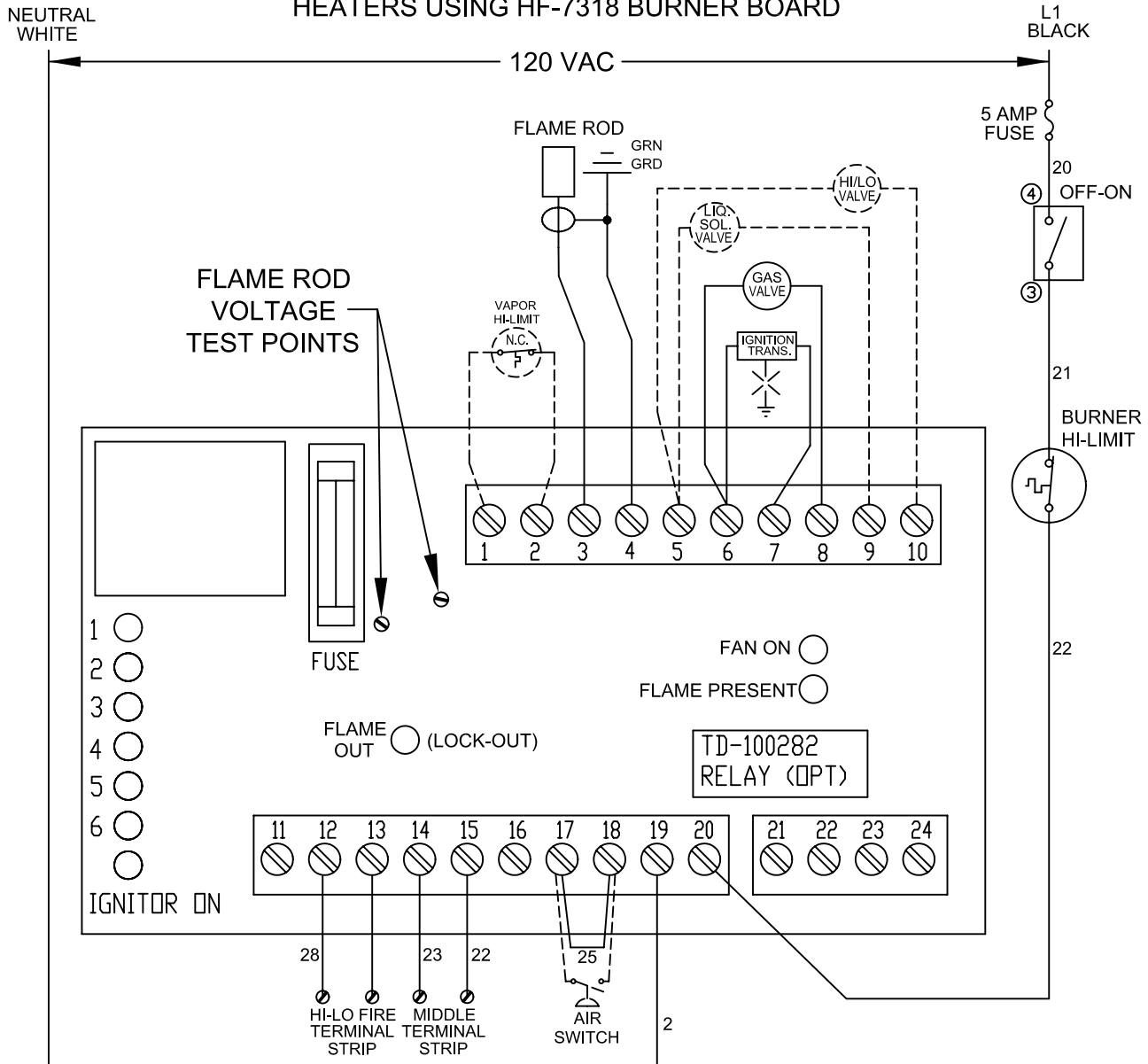


REVISED SCHEMATIC FOR FFI SILVER KING
HEATERS USING HF-7318 BURNER BOARD

DC - 1656



○ INDICATES "OFF" ● INDICATES "ON"
WAIT FOR 20 SECOND PURGE TO ALLOW ALL LIGHTS TO CYCLE
TROUBLESHOOT AFTER THE PURGE CYCLE IS COMPLETE

INDICATION	POSSIBLE CAUSE	POSSIBLE SOLUTION
○ ○ ○ ○ ○ ○ 1 2 3 4 5 6	Defective ON/OFF Switch	Replace Switch
○ ○ ○ ○ ○ ○ 1 2 3 4 5 6	Burner Hi-Limit	Reset or Replace Hi-Limit
○ ○ ○ ○ ○ ○ 1 2 3 4 5 6	Blown Fuse - Power From Fan	Determine Short & Replace Fuse
● ○ ○ ○ ○ ○ 1 2 3 4 5 6	Blown Fuse on Burner Board	Determine Short & Replace Fuse
○ ○ ○ ○ ○ ○ 1 2 3 4 5 6	Flame Rod (Flame Present Light ON)	Clean or Replace Flame Rod
● ● ○ ○ ○ ○ 1 2 3 4 5 6	Defective HF-7318 Burner Board	Replace Board
○ ○ ○ ○ ○ ○ 1 2 3 4 5 6	Air Switch (Fan On Light is OFF)	Circuit at 17 & 18 Must Be Closed
○ ○ ○ ○ ○ ○ 1 2 3 4 5 6	LOCK-OUT (Flame Out Light is ON)	Check Flame Rod & Ignitor Location
● ● ● ○ ○ ○ 1 2 3 4 5 6	Vaporizer Hi-Limit is Open	Adjust Vaporizer or Replace Hi-Limit
● ● ● ● ○ ○ 1 2 3 4 5 6	Humidistat/Thermostat	Set to Call for Heat or Replace Control
● ● ● ● ● ○ 1 2 3 4 5 6	Ignitor Plug	Clean or Replace Ignitor Plug
○ ○ ○ ○ ○ ○ 1 2 3 4 5 6	No Fuel Pressure Indicated	Check Manual Valves & Fuel Supply
○ ○ ○ ○ ○ ○ 1 2 3 4 5 6	Defective Solenoid Valve	Replace Coil or Valve Assembly