

JUMBO SCATTER-GRAIN, FFD-200

INSTALLATION — OPERATION — SERVICE

Specifications

The Scatter-Grain FFD-200 distributor is a compact unit of heavy construction. The 1 horsepower, totally enclosed motor mounts directly on a sealed planetary gear drive which is permanently packed in grease. The output shaft is supported with sealed tapered roller bearings for long life and trouble-free service.

Maximum grain capacity is 4,000 to 6,000 bushels per hour, depending on moisture content and weight of grain.

The two-way, variable pitch grain thrower blade may be tilted to allow grain to clear roof angle and also may be rotated at "T" drive, by means of slots provided, to permit limited tilt in the second plane. This compound angle allows the thrower blade to have a variable bite on the grain. Adjustable center openings provide for controlled center filling.

Hangers adjust to roof openings from 21 to 31 inches.

Unit weighs 110 pounds.

Installation and Operation

The Scatter-Grain is shipped pre-assembled. The following information will facilitate pre-adjustment of the unit before installation. To adjust for large diameter bins (36 feet), the greatest possible throw is required. This is achieved by tilting the thrower blade for maximum throw and increasing the bite of the blade on the grain. To increase the bite, loosen "U" bolts and rotate the blade, at the "T" drive, to its extreme clockwise position in the slots, when looking down on the unit from above. Adjust the grain guides in direct line of the grain stream and close the center openings (or nearly so) to prevent overflowing center of bin.

Check ROTATION; it should be COUNTER-CLOCKWISE as viewed from above the unit.

For small diameter bins (24 feet and below), adjust tilt on blade to provide required grain throw, and decrease the bite to minimum by loosening "U" bolts and rotating the blade, at the "T" drive, to its extreme counter-clockwise position in the slots, when looking down on the unit from above; open dampers completely (or nearly so); run grain guides across grain stream to direct flow.

Use intermediate adjustments for bins between these diameters.

In all cases the GRAIN STREAM must be CENTERED directly in the center of the unit to prevent high or low

areas from one side of the bin to the other.

Set the hanger extensions to fit the roof opening. Level with spacer washers if required. Holes are provided in the ends of the hangers to secure unit to hatch collar by bolting. Rotate the thrower blade by hand to be sure no obstructions are encountered before applying power. **IMPORTANT:** Scatter-Grain hangers must be bolted securely to bin roof structure to prevent movement of the hopper.

The units are shipped with the motor wires not connected. Carefully connect motor wires for the desired operating voltage as indicated on the decal within the terminal box.

Make certain to use electrical connectors of adequate size. Motors connected for 1 Ph. -230V., or 3 Ph. -220V. require No. 12 wire minimum, in runs not exceeding 200 ft. Motors connected for 110V. require No. 10 wire minimum in runs not exceeding 200 ft. Check with electrician for longer runs.

Service

The motor bearings are permanently lubricated and need no further attention.

The planetary gear case is packed with grease. Check the seals and bearings annually for tightness. A bearing take-up nut is provided (externally of the case) at the out-put shaft to keep the tapered bearings and seals snug. No additional grease is required unless seal leakage occurs.

The motor is protected with automatic reset type internal protection. The circuit should also be protected with slow-blow type fuses at the time of installation. Use a 15 amp fuse for 1 Ph. -230V., or 25 amp for 1 Ph. -110V. Use a 6 amp fuse for 3 Ph. 220V. connected units.

Should the motor fail to start, check for freedom of rotation and be certain that power is being supplied to the motor.

Should the motor stop operating, wait five minutes for the automatic overload protector to reset and try it again. If this condition persists, check the power supply for proper voltage and the motor for freedom of rotation.

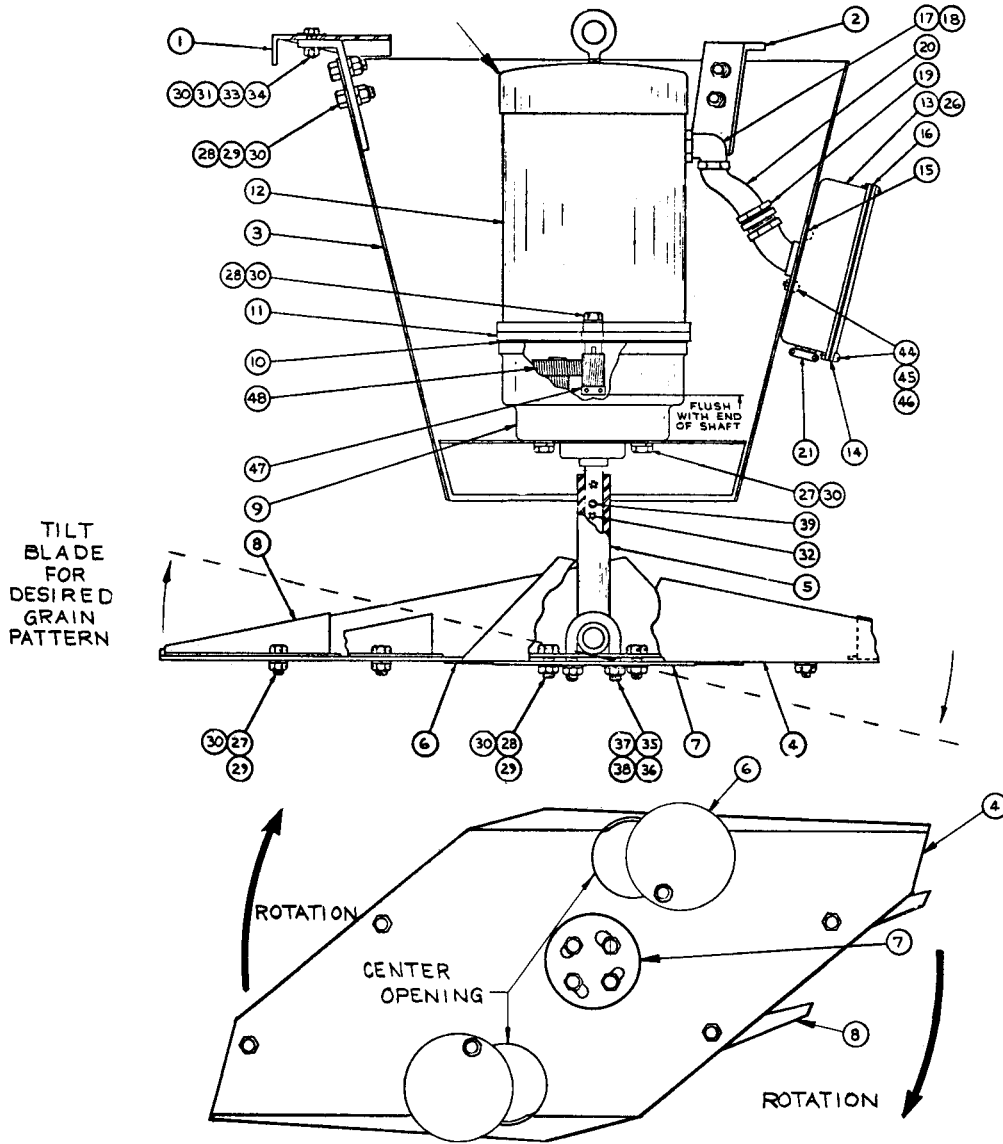
See drawing on other side for parts identification and Index Numbers.

FARM FANS, INC.

5900 ELMWOOD AVENUE • INDIANAPOLIS, INDIANA 46203

Printed in USA

Wear Shield (Supplied With Motor)*



Parts List

ITEM	PART NO.	DESCRIPTION	QUANTITY	
			1 Ph	3 Ph.
1	A06-012	Hanger Extension	3	3
2	A06-026	Hanger Bracket	3	3
3	A06-023	Welded Cone	1	1
4	A06-022	Welded Scatter Plate	1	1
5	A06-024	Welded Drive Shaft	1	1
6	A06-016	Damper	2	2
7	A06-027	Back-Up Plate	1	1
8	A06-013	Grain Guide	4	4
9	A08-021	Gear Box	1	1
10	A21-002	Gasket	1	1
11	A17-074	Adaptor Plate	1	1
12	02-010-12EE-1	Motor, 1750 rpm, w/wear shield*	1	--
12	02-010-34EE-1	Motor, 1750 rpm, w/wear shield*	--	1
13	A17-072	Capacitor Box	1	1
14	325-8-11	Capacitor Box Cover	1	1
15	329-8-19	Gasket	1	1
16	325-8-22	Cover Gasket	1	1
17		Sealtite Connector - ST9075	1	--
18		Sealtite Connector - ST4575	--	1
19		Sealtite Connector - ST75	1	1
20	**	Sealtite Conduit, 3/4" x 4-3/8"	1	--
20	**	Sealtite Conduit, 3/4" x 2-1/4"	--	1
21	**	Box Connector - 3/8"	1	1
22	A23-010	Decal - "American Standard"	1	1
23	A23-011	Decal - "Scattergrain"	1	1

ITEM	PART NO.	DESCRIPTION	QUANTITY	
			1 Ph.	3 Ph.
24	A23-013	Decal - "Farm Fans"	1	1
25	A23-014	Decal - "Jumbo"	1	1
26		Decal - 1 PH Wiring Diagram	1	--
26		Decal - 3 PH Wiring Diagram	--	1
27	**	5/16 - 18 NC x 3/4" Bolt	10	10
28	**	5/16 - 18 NC x 1" Bolt	10	10
29	**	5/16 - 18 NC Nut	12	12
30	**	5/16 Split Lock Washer	21	21
31	**	5/16 Flat Washer	3	3
32	**	5/16 - 18 x 1/4" Setscrew	2	2
33	**	5/16 - 24 NF x 1" Bolt (Grade 5)	3	3
34	**	5/16 - 24 NF Nut (Grade 5)	3	3
35	**	3/8 - 16 NC x 2 - 1/4" "U" Bolt	2	2
36	**	3/8 - 16 NC Nut	4	4
37	**	3/8 Lock Washer	4	4
38	**	3/8 Flat Washer	4	4
39	**	1/4 Dia. x 1" Spring Pin	1	1
40	**	1/4 - 20 NC x 1-1/4" Bolt	3	3
41	**	1/4 - 20 NC Nut	3	3
42	**	1/4 Flat Washer	3	3
43	**	Washer-11/32 ID x 1-1/2 OD x 1/16"	6	6
44	**	#10 - 32 x 3/4" Stove Bolt	6	6
45	**	#10 - 32 Nut	6	6
46	**	#10 Split Lock Washer	6	6
47	A08-021-1	Replacement Motor Pinion Gear	1	1
48	A08-021-2	Replacement Cluster Gear Ass'y	1	1

*When Ordering Replacement Wear Shields, Specify Motor Make and Model No.
 **Standard Hardware Items - Purchase Locally